

Governance structure



Congress

Attended by delegates from each sector. Occuring every second year, this is the highest decision making body of the PSA.

Congress elects the president.



Executive Board - reports to congress

Made up of the president, the two national secretaries, the convenors of each sector committee and Te Rūnanga, and a representative of PSA staff.

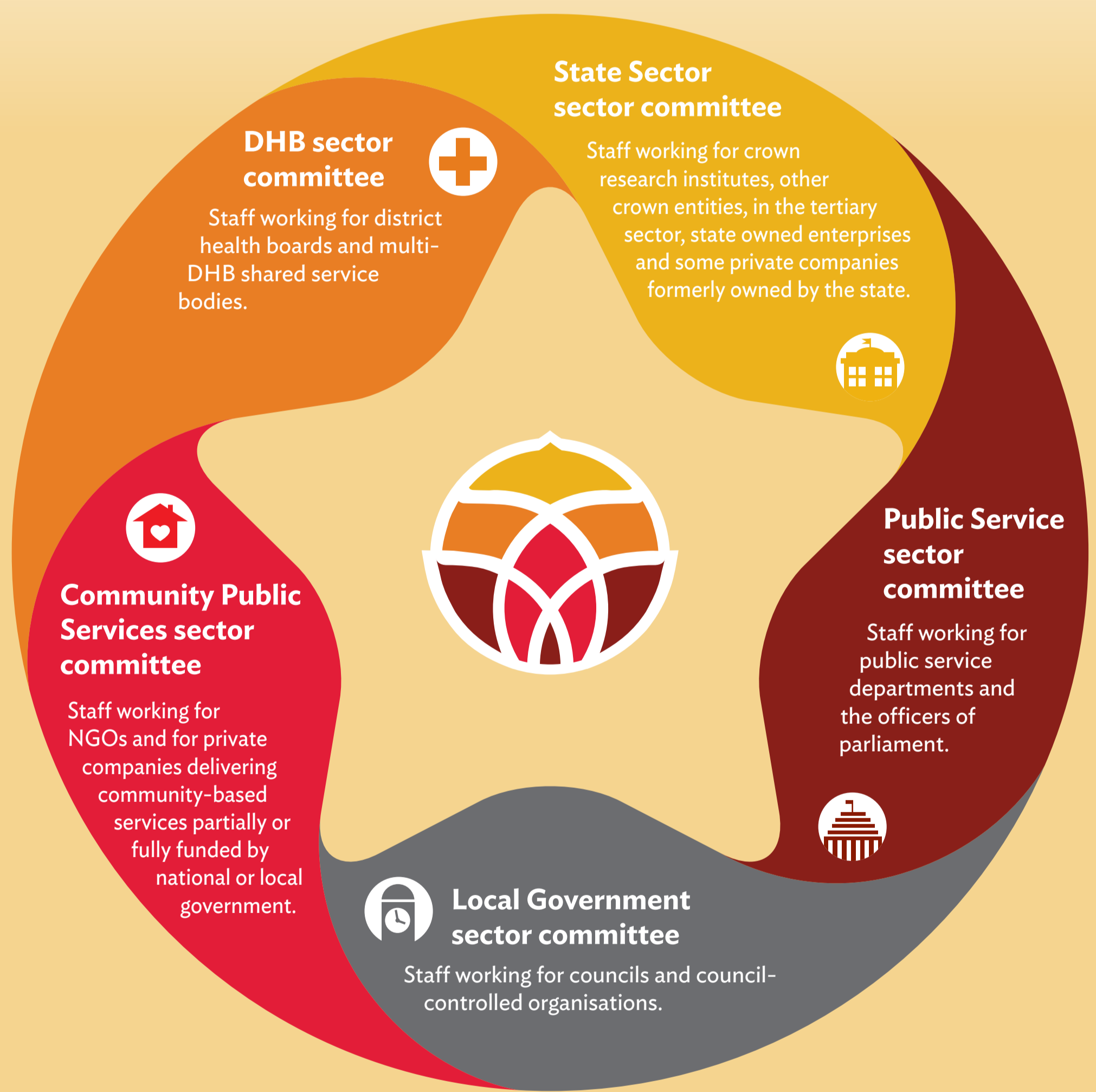
The governance body of the PSA between congresses.



Sector committees - represented on the executive board

Delegates in each of our five sectors elect a committee to lead the work of the PSA in their area. Committees are made up of delegates who represent members in a particular region, industry or enterprise, plus representatives from Te Rūnanga.

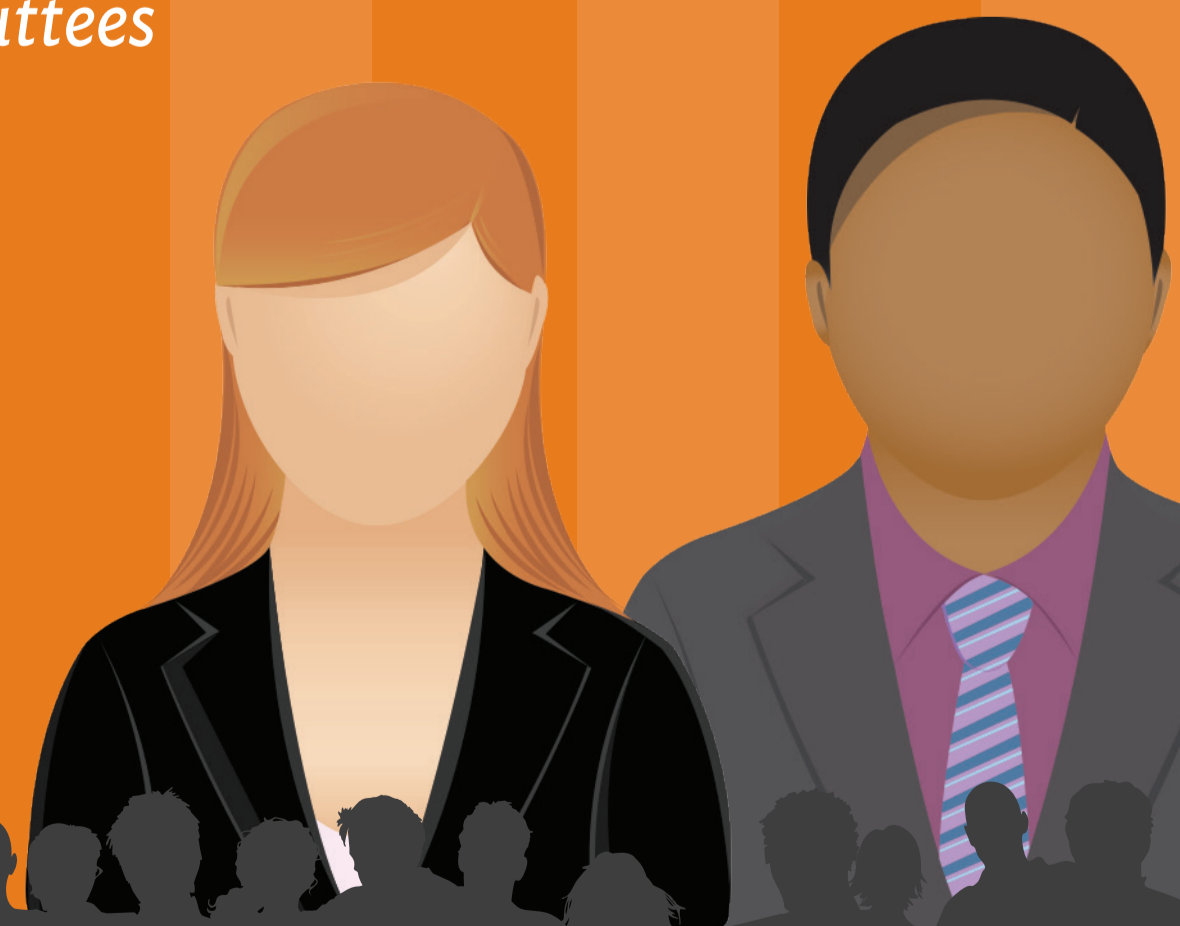
Some committees also have additional women's representation.



Delegates - elect sector committees

Elected by PSA members at a particular workplace to represent them and to lead union activity in a workplace.

Different workplaces will have different numbers of delegates and structures that they work in.



Workplaces - elect delegates

Where you work, alongside other fabulous PSA members.



Te Rūnanga

Te Rūnanga o Ngā Toa Āwhina is the body for all Māori members of the PSA. Te Rūnanga ensures that Māori have a voice at all levels of the PSA, and provide leadership on all issues relating to Māori in the PSA. Te Rūnanga has its own internal structure with a Kōmiti made up of representatives from each sector.

All levels

Networks & Committees

The PSA has a range of member networks and committees based on demographics and areas of interest: Women's Network, PSA Youth, Pasefika, Out@PSA, Deaf and Disabled Members, Eco Reps, Ethics Network, Health & Safety, Learning Reps, Science Committee, Mental Health Committee, Social Workers Action Network.

Gender equity

From October 2016, all PSA governance structures and delegations will have gender representation the same as the members they represent.

